



5 Switches, control units, sockets and plugs



5 Sockets and plugs ATX

3 16 A Built-in wall sockets

The built-in wall sockets are fitted with an integrated interruption of the poles by a double-safety device. When the plug is pulled, there will be:

- an automatic and simultaneous interruption of every phase in a first explosion-proof chamber
- voltage-free separation of the pins in a second explosion-proof chamber

The cover can be locked in 3 positions:

- with connected plug under tension
- with connected plug voltage free
- without plug, cover closed

For safety reasons, only the mentioned explosion-proof plugs fit in the sockets. The explosion-proof plugs do fit in normal sockets in accordance with CEE17.

II 2 G Ex d e IIC T6/T5

II 2 D Ex tD A21 IP66 T68°C

Zone 0	✗	Zone 20	✗
Zone 1	✓	Zone 21	✓
Zone 2	✓	Zone 22	✓

LCIE02ATEX6068



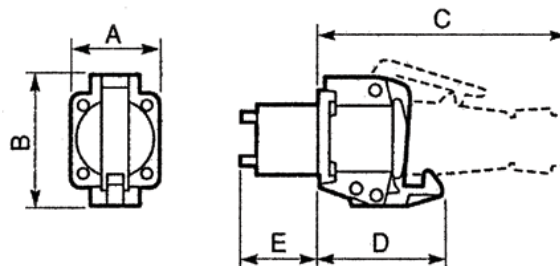
Specifications

Connection	2x4mm ²
Protection	IP66 (with or without connected plug)
Material	high-quality, impact-resistant plastic
Ambiant temperature	-20°C - +40/55°C

Ordering data

Code	No. of poles	Nom. current	Voltage	Weight
I16-024-2	2P	16A	24 VAC	0,25 kg
I16-024-3	2P+E	16A	24 VAC	0,25 kg
I16-230-3	2P+E	16A	220/240 VAC	0,27 kg
I16-400-4	3P+E	16A	380/415 VAC	0,36 kg
I16-400-5	3P+N+E	16A	380/415 VAC	0,39 kg

Dimensional sketches



Product code	Dimensions				
	A	B	C	D	E
I16-024-2	54	80	160	76	56
I16-024-3	54	80	160	76	56
I16-230-3	54	80	160	76	56
I16-400-4	68	90	160	76	56
I16-400-5	68	90	160	76	56

